

# Recreation



At Colorbiotics, we've always believed that our word is just as important as what we make. That products should be honest. That promises should be accurate down to the decimal.

After 40 years of walking that talk, we find ourselves at the forefront of science and service in not only this industry but any industry. So now it's our job to keep building — to believe that the best of anything can be even better.

That's why customers trust us for everything from the mulch colorant that made our name to the rubber on football fields and the machines behind the scenes.

# Building Trust





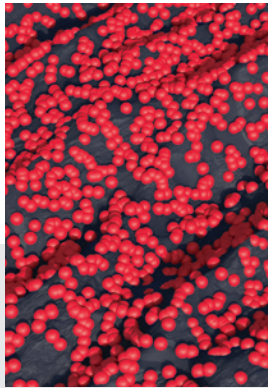
A photograph of a yellow plastic slide on a bed of red wood mulch. The slide is on the left side of the frame, and a blue plastic support structure is visible behind it. A black corrugated hose runs horizontally across the middle ground. The background shows a green lawn and a stone wall. The text "Naturally good. Scientifically better." is overlaid in white, bold, sans-serif font in the lower half of the image.

**Naturally good.  
Scientifically  
better.**

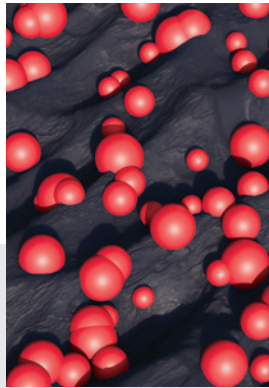


Colorbiotics® coatings are built on the formula we've balanced in the lab and perfected in the field.

All the science inside our totes is why we can promise such complete encapsulation, no matter what material you're working with, and how we deliver durability that must be measured by the decade.



COLORBIOTICS  
COVERAGE



COMPETITOR  
COVERAGE

Our resins work smarter, too, because we have our own proprietary compositions that have been designed to be both strong and soft. That equilibrium between stability and flexibility is what allows the coating to not only withstand weather testing, but most importantly, move with the underlying material to prevent real-time wear out in the world.

Plus, the adhesive properties of our resins are simply powerful enough to lock pigment onto material for years to come — and those colors won't bleed, either.

The result is a coating so consistent, so concentrated that you can use a lot less of it. That means your product will cost less by the ton, which is what matters to your bottom line.

#### **What do we mean when we talk about the science of encapsulation?**

The particles inside our pigments are sheared so small that the unique nooks and crannies of the underlying material are evenly and equally covered in a brilliant, resilient hue. Every time.



# Rubber Tree®

Rubber Tree colorant is a water-based pigment that can be used on 3/4-inch and 3/8-inch granules for loose fill material. And once it's there, it's going to stay there.

If you're looking to get the most pigment per ton — and per dollar — this is the right colorant for you.

Not to mention the world's largest color palette, including the neutrals needed to match materials like concrete, and landscaper favorites that will shine under years of sun. With so many hues to choose from, you'll always have the perfect complement in your back pocket.

Rubber Tree is also very, very easy to use: Hook up the tote, mix the colorant and pump it into the machine, then dry the product and you're good to go.



Brick Red



Cinnamon



Forest Green



Yellow Green



Cypress



Khaki



Silver



Coal Black

*Rubber Tree is only available in totes.*







# Reflex Series<sup>®</sup>

The Reflex Series is made to make the most of Rubber Tree colorant. This high-efficiency machine can color up to 8,000 pounds of rubber per hour and handle material sizes ranging from 30-mesh granules to 1-inch chunks.

Inside, there's a suite of user assistance features that eliminate waste and help prevent operator error at every step of the production process.

The automatic infeed and outfeed adjustments ensure the constant, consistent flow of product through the machine. Then, when it's time to switch colors, cleanout is so simple it shouldn't take more than 15 minutes — and getting the next batch going only takes one button, thanks to the programmable recipes.

The Reflex Series comes equipped with its own color pump and control panel, so you can get rid of some accessories and run the rest through this machine.





# Engineered to endure gameday.

CushionFall® Sport takes the science behind our coatings to stadium status.

This water-based pigment is sealed with a urethane topcoat to encapsulate crumb rubber particles, match artificial grass and better protect student-athletes.

Due to the coating's design, each of those crumb rubber particles can repel water and moisture much, much faster than most synthetic surfaces.

We ran CushionFall Sport through a gauntlet of testing to prove that the infill will still maintain

its permeability, as well as its shock absorption, after 10 years of wear and tear under the weight of the offensive linemen. The conclusion? Of course it will.

The natural color of the infill also eliminates “five o’clock shadow” from the field for fans, whether they’re watching in the stands or in high definition.



# For stronger bonds.

Poly Tree® Fusion is a clear urethane base that can be used for loose fill, pressed goods and molded goods. It's robust bond strength makes it suitable for pour-in-place playground surfaces and other bonded-rubber sport surfaces that receive high foot traffic.





# Impact<sup>®</sup> Secure

Back, at the track, at the wall, that's Impact Secure.

This heavy-duty resin works with absolutely any colorant to bring durability and vibrancy absolutely anywhere you need it — from lava rock and river rock to pea gravel and crushed limestone.

That kind of utility is yet another reason why Impact Secure has become the go-to resin for landscape rock and the infill mixes used on baseball fields.

## **Get the perfect shade and adhesion.**

To achieve the right baseball diamond shade, mix Impact Secure with Mulch Magic Ruby Red. For turf infill, mix Impact Secure with sand colorant for added durability and adhesion.

*Impact Secure is available in totes and drums.*



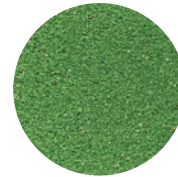
# Sand Colorant

Colorbiotics® sand colorant is a safety-tested concentrate that adheres natural hues to the particles of sand in divot mixes and top dressing.

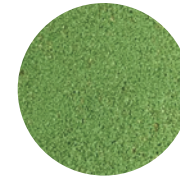
In other words, we reengineered our tried-and-true formula to the exact specifications of golf course grounds crews.

You can choose between two shades — Green and Dark Green — designed to match the local species of grass on courses across the country.

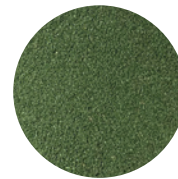
*Sand colorant is available in totes and drums.*



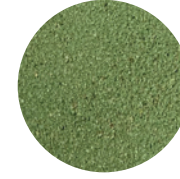
**Green**  
12.0 pounds per ton /  
1.0 gallons per ton



**Green**  
6.0 pounds per ton /  
0.5 gallons per ton



**Dark Green**  
12.0 pounds per ton /  
1.0 gallons per ton



**Dark Green**  
6.0 pounds per ton /  
0.5 gallons per ton



# Integrity is never indulgent.

Success in this industry is about more than what's in your tote. So our business is about more than that, too.

Colorbiotics coatings, colorant and coloring equipment are designed to give you every advantage. But that's only the half of it. Everything we do is backed by on-site service and expert support — and nobody is better equipped to be there than our team.

That first transaction is the start of a partnership.

We'll work shoulder to shoulder with your team on your jobsite and do whatever it takes to build your bottom line because, at the end of the day, that's how we build ours. You can always give us a call to get answers straight from the source. Even if you're asking for advice on somebody else's system.

When you trust us, it's on us. We stand behind our science. We stand behind the most brilliant and resilient coatings money can buy. Why? Our word is just as good as what we make it.







A SIKA BRAND

888-663-6980 | [colorbiotics.com](https://colorbiotics.com)

Colorbiotics®, Rubber Tree®, Reflex Series®, Cushion Fall®, PolyTree® and Impact® are trademarks of Sika Corporation in the U.S. and other countries. ©2025 Sika Corporation. All Rights Reserved.

1/2026