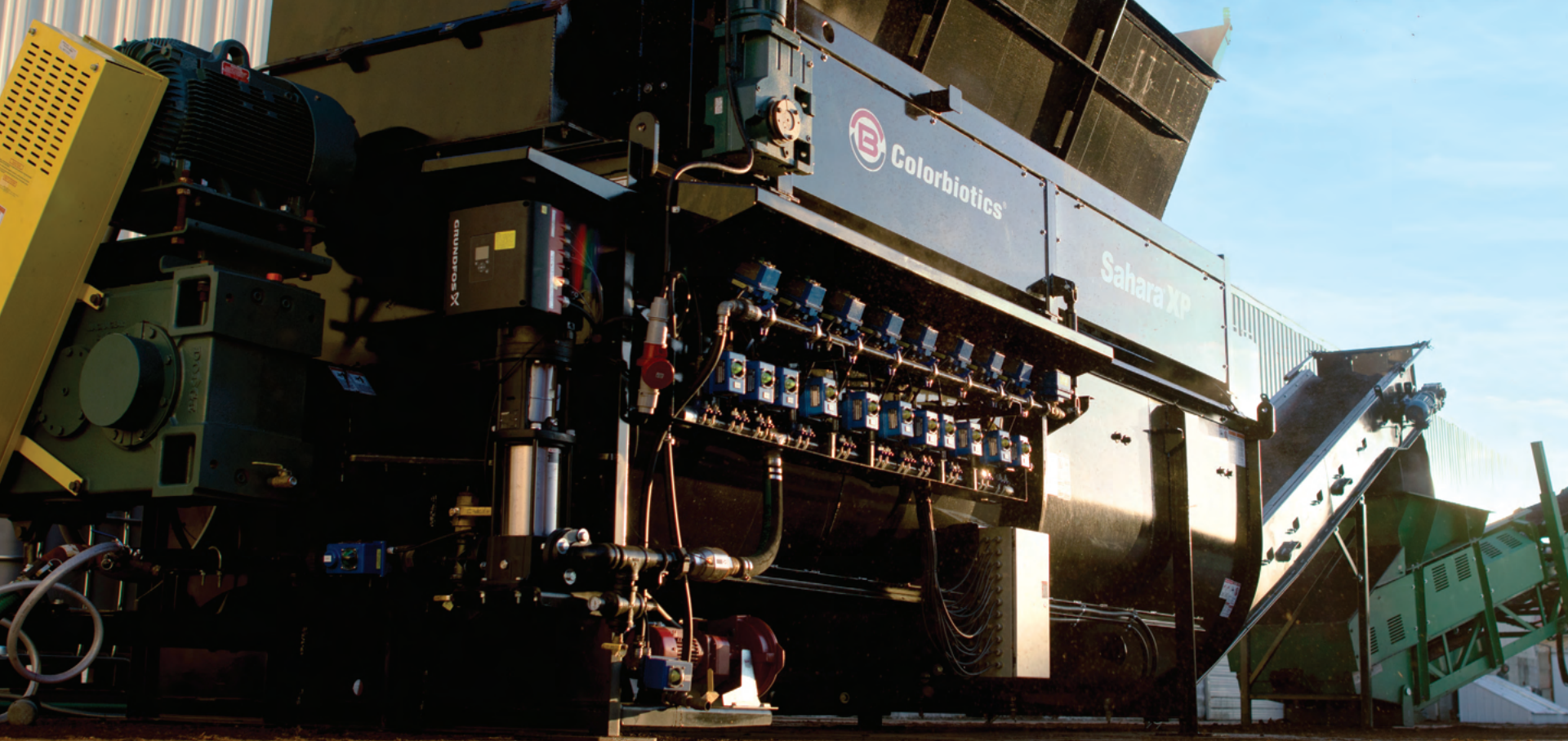


# *Sahara*<sup>®</sup> **XP**



A SIKA BRAND

**Building Trust**



# Mulch, meet your maker.

The Sahara® XP. It's the toughest, most intelligent Sahara ever assembled.

And that makes it the toughest, most intelligent coloring system ever assembled.





# No machine colors mulch like this machine.

The mixing chamber on the Sahara XP is the first of its kind. The architecture of the chamber works with the innovations within to eliminate water waste and maximize color efficiency — trimming the fat from every last bucket of mulch. And our belt feed hopper ensures a consistent flow of material through the chamber.

---

## Technical Data

Output: 100 to 350 cubic yards per hour  
Water: 0 to 80 gallons per minute  
Power: 200 amps @ 460V 3PH  
Motors: Electric (up to 100 HP)

## Measurements

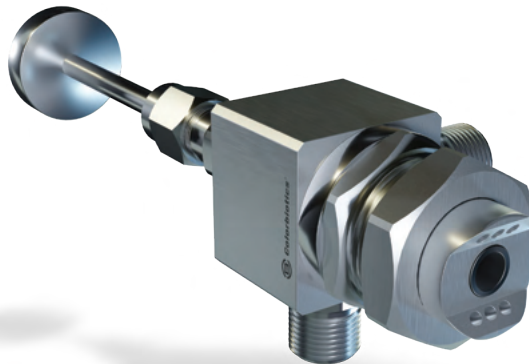
Height: 13 ft 10 1/16 in  
Width: 9 ft 6 in  
Length: 43 ft 3/8 in  
Infeed: 12 ft 3 7/8 in  
Outfeed: 6 ft 10 in

## Available Options

Cold weather package  
Auxiliary pumps  
Discharge conveyor length  
Generator

# The difference in brilliance is size.

As soon as colorant shoots out of our atomizer nozzles, the stream is knifed into a finer and finer mist by a series of high-velocity water jets. That knifing action atomizes the colorant until its particles are small enough to cover the distinct surface characteristics of different wood fibers.



These new on-demand nozzles will flush out color and water for you, too. Just tap a button on the XP's interface and the system will go through an automated cleanout cycle.





# Each piece, every which way.

Bilateral agitation is our patented “push-and-pull” process that keeps the blades turning in one constant direction to conserve energy, while the unique combination of blades throws the mulch in all different directions to maximize exposure.

That explanation almost certainly undersells the painstakingly placed blades, positioned at mathematically precise angles. But basically, this is how we pack so much muscle into such an efficient machine.



# Same time. Same place. **Same color.**

The exact number of minutes and seconds mulch spends in the mixing chamber is what we call “retention time.”

When it comes to that magic number of minutes and seconds, our belt feed hopper leaves nothing to chance: Mulch enters the mixing chamber at the same location, then spends the same amount of time getting thrown around inside. That’s why your piles of product will all be the same color across hours, days, weeks or seasons.



#### Mulch Conditioner

After a bucket is dumped into the hopper, these tines break up the mulch to help prepare each piece for the coloring process.

#### Discharge Conveyor

At a perfectly friendly height of 6 feet, our discharge conveyor sends finished product out the discharge end of the XP, so the system can kick out mulch directly onto your conveyor.

No jerry-rigging necessary.

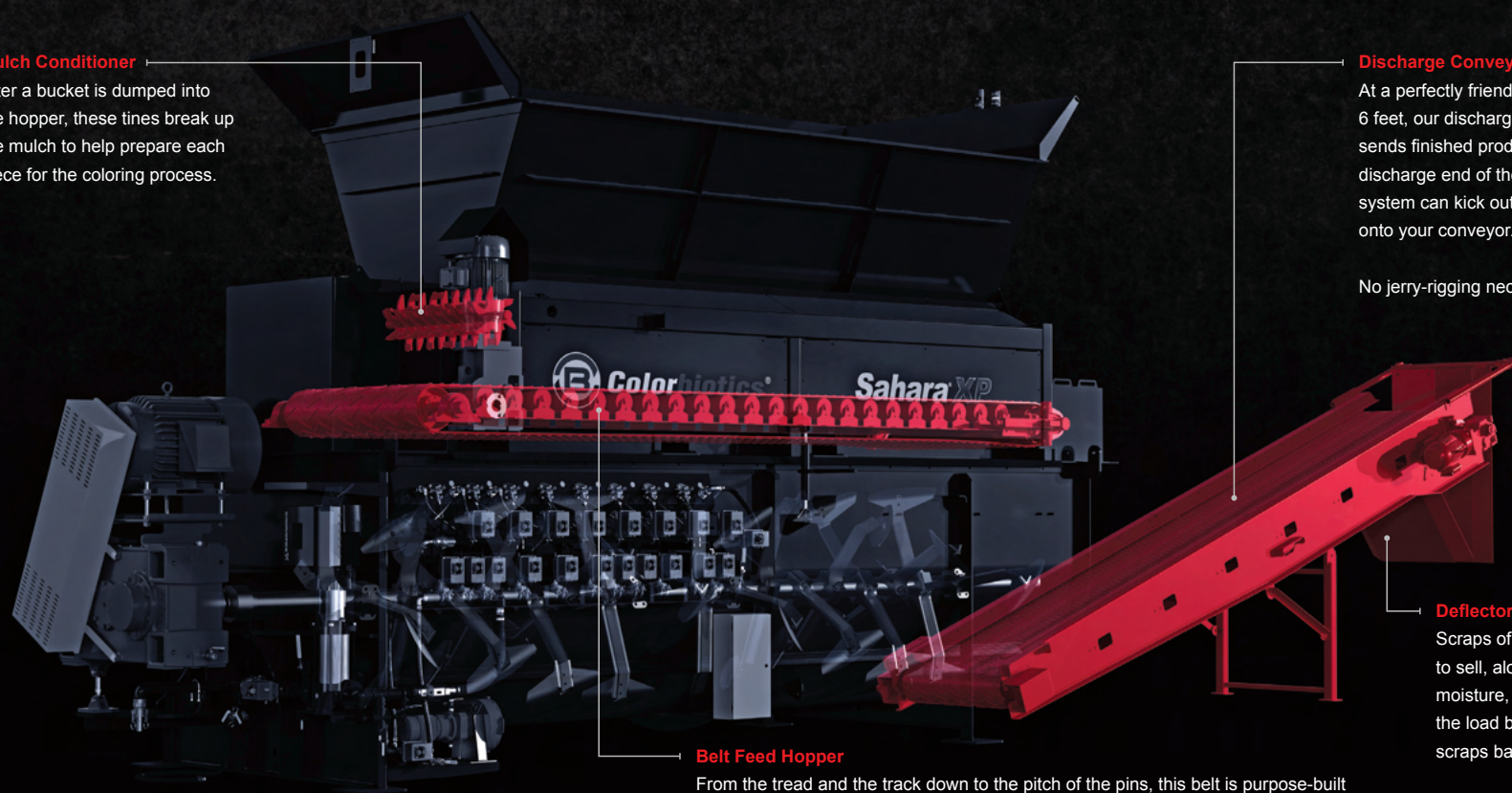
#### Belt Feed Hopper

From the tread and the track down to the pitch of the pins, this belt is purpose-built for the mulch business. All those carefully considered decisions come together to keep material flowing through the machine at a consistent pace.

#### Deflector Chute

Scraps of mulch that are too small to sell, along with any droplets of moisture, are knocked loose from the load before this chute sends the scraps back onto the stacker belt.

The deflector chute also cleans the belt better and helps eliminate buildup at the tail pulley.





# **Safety.** **It's in the** **XP's DNA.**

This machine isn't just equipped with safety features.

It's engineered to remove risk from the ground up.

In the development of the XP, we reworked the nuts-and-bolts construction of the coloring system — for example, eliminating the need to climb up on top of the hopper — to anticipate potential hazards at the blueprint stage. Of course, while the updated design helps prevent accidents in the first place, these safety features are always there to protect operators.

### Active Start-Up Monitoring

Before a single blade moves a single inch, the XP sounds an alarm and flashes warning lights for everybody in its vicinity. Once started, the lights change color to offer at-a-glance status updates on both machine and mulch.

### Magnetic Proximity Sensor #1

This safety switch automatically activates the emergency stop system if the mixer discharge door is opened when the blades are turning inside.

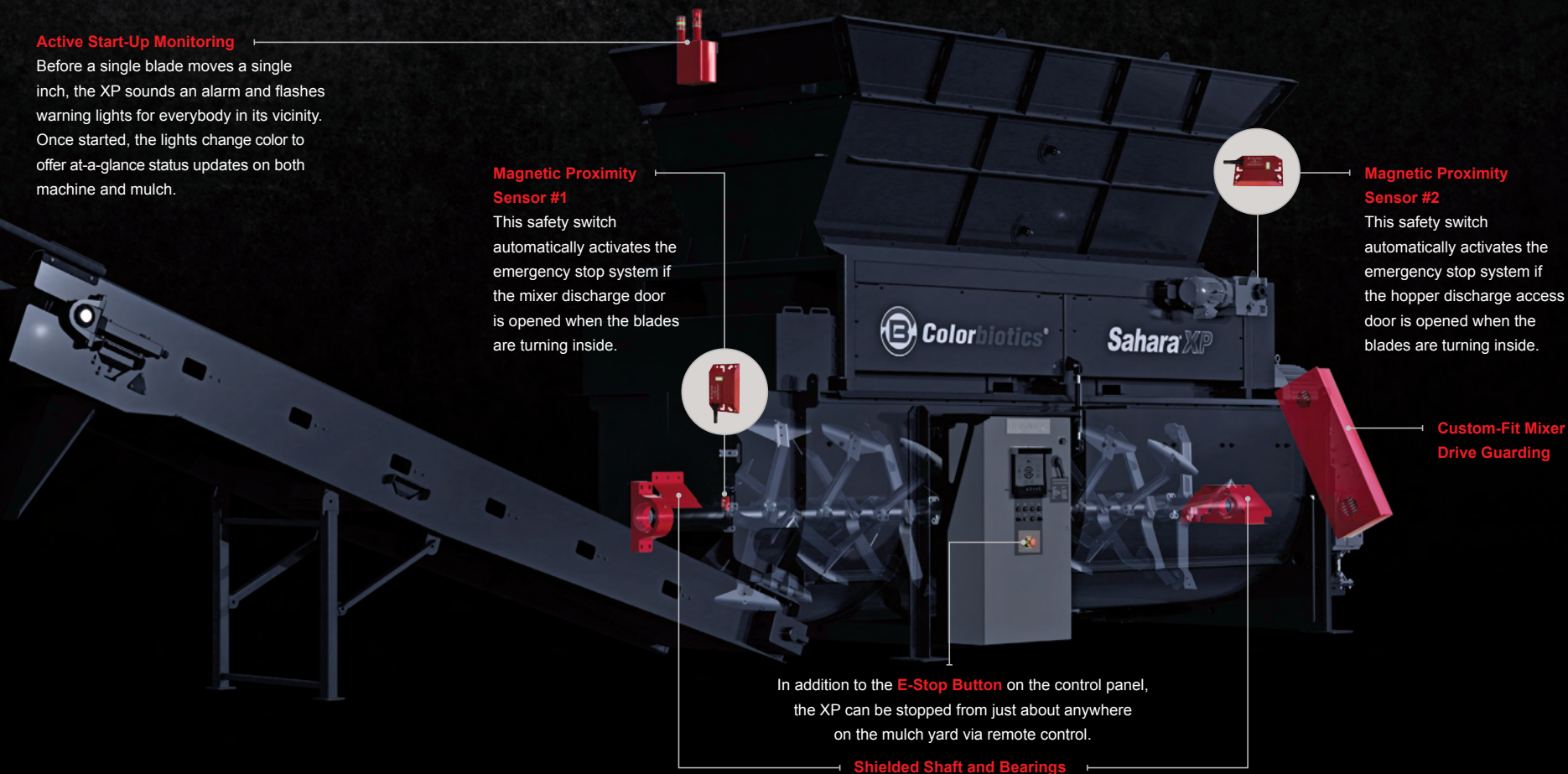
### Magnetic Proximity Sensor #2

This safety switch automatically activates the emergency stop system if the hopper discharge access door is opened when the blades are turning inside.

### Custom-Fit Mixer Drive Guarding

In addition to the **E-Stop Button** on the control panel, the XP can be stopped from just about anywhere on the mulch yard via remote control.

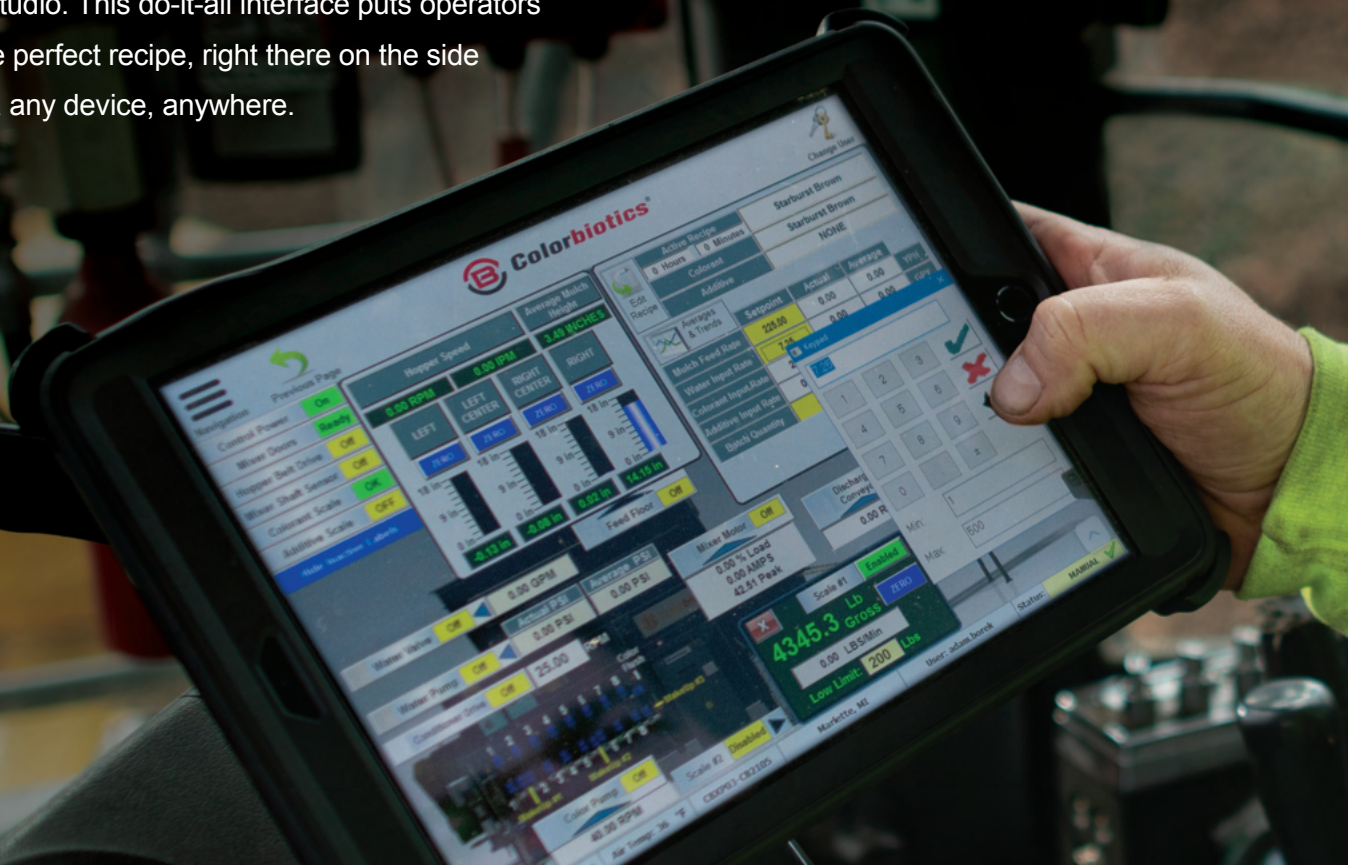
### Shielded Shaft and Bearings





# As simple as push to start.

If you can punch the numbers on a microwave, you can color mulch with the Sahara XP. That's because the XP comes equipped with GEM Studio. This do-it-all interface puts operators one tap away from the perfect recipe, right there on the side of the machine. Or via any device, anywhere.

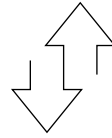




# Data, down to the drop.

GEM Studio maintains constant communication with sensors throughout the Sahara XP to capture and compute data on every last drop of material. Those insights can be used to improve the product in real time. Or you can crunch the numbers to find hidden dollars and losses in everything from inventory to invoicing.





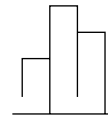
## Input Assist

GEM Studio automatically detects opportunities to maximize efficiencies and minimize costly mistakes, then helps perfect each recipe program based on historical performance.



## Adaptive Material Control

With measurements coming in every 5 seconds, GEM Studio can recalculate what's needed for each recipe — to outsmart the most minute fluctuations in output.



## Performance Metrics

GEM Studio keeps a complete archive of historical analytics and sends real-time alerts to any smart device. So you can take a vacation and still see inside your Sahara.



## Interactive Maintenance

GEM Studio syncs maintenance tasks to create a trackable to-do list. And when it's time to replace a part, operators can order the exact one right there on the touchscreen.



## Remote Programming and Troubleshooting

If an operator runs into an issue or needs assistance with something, our team can connect directly to your GEM Studio and help with just about anything.



# It's go time.

The Sahara® XP Mobile. Get out and go explore new frontiers of profit  
— following the money from one mulch yard to the next.







# The power of choice.

The XP Mobile is a self-powered coloring system. Equipped with an on-board generator and three-phase plugs, you can take your pick of power source and continue to kick out product — no matter how far from the nearest power line. If you have electrical at one site but not another, it's easy to switch between shore and generator power.

---

## Technical Data

Output: 100 to 350 cubic yards per hour  
Water: 0 to 80 gallons per minute  
Generator Power: 242 kW  
Shore Power: 200 amps  
Motors: Electric (up to 100 HP)

## Measurements (Unfolded)

Height: 15 ft 4 in  
Width: 10 ft 7 in  
Length: 60 ft  
Infeed: 14 ft 6 in  
Outfeed: 14 ft 2 in

## Measurements (Folded)

Height: 13 ft 6 in  
Width: 8 ft 6 in  
Length: 51 ft 4 in

# **A one-stop shop on eight wheels.**

Inside the XP Mobile, you'll find the same powerful features and thoughtful engineering — atomizer nozzles, bilateral agitation, belt feed hopper — as the original. But the XP Mobile sits upon a chassis all its own. Fabricated to the exact specifications of the coloring system and configured to meet operators at eye level, everything your team needs is already on board. The only thing missing? Someone in the driver's seat.





#### Tier 4 Genset

The generator has its own control panel to provide parameter readouts and track fuel usage throughout the 18-hour runtime.

#### Trailer Crane

This crane rotates a full 360 degrees to 1) move the scale off the trailer and onto the ground, and 2) lift the tote mixer above and into the tote.

#### Discharge Conveyor

Extending to 18 feet, this conveyor can dump mulch wherever you want: onto the ground, onto a stacking conveyor and/or into a truck.

#### Platform Scale

The best scale in the business comes standard with the XP Mobile. There's even an angled space on the trailer to store and drain the scale between uses.



# Ready to hit the road.

Broaden the horizons of your business with a workhorse purpose-built to giddy up. From the dimensions of the frame to mandated details like lights and brakes, the XP Mobile is so road-ready it doesn't need a pilot car or license plates. And this trailer-mounted unit is as simple to hitch and haul as any other piece of construction equipment. So instead of moving 80,000 yards of mulch, you can move just this one machine.



#### Hydraulic Controls

You can use levers on the machine or the XP Mobile's remote control to level the trailer and unfold the retractables when parked, then fold everything in for transport.

#### Retractable Conveyor & Retractable Hopper

When it's time to hit the road, hit exactly two buttons to have the conveyor and hopper lid fold in like the roof of a Corvette convertible.

#### Mandated Details

Yes, the XP Mobile plays by the rules of the road. The trailer has its own suspension system, air brakes, stop lamps, tail lamps, turn signals, markers and reflectors.

#### Sahara Chassis

This isn't any old trailer. The height, width and weight have been engineered, inch by inch, pound by pound, around oversize and wide load regulations.

#### Travel Covers

The custom-fit covers for the control panel and valves can be flipped down for safe transport, then back up for production.





# Building trust. That's what we're all about.

The Sahara XP and XP Mobile are built for busy season. From the architecture of the mixing chambers to the materials of the components, each detail has been engineered to reduce wear and tear, cutting down on maintenance costs over the lifetime of the machines.

If your Sahara ever requires attention or calibration, we're here to help. All the trucks in our fleet carry genuine replacement parts in case an inspection identifies the need for one, right then and there. Plus, a 7,200-pound crane, welders for different feeds and a plasma cutter. Just in case.

With more machines working for more mulch producers than anyone else, our team has seen too many problems complicated by local electricians and third-party suppliers. We'd rather deliver the real deal ourselves or make a trip to fix the issue firsthand. That way it's taken care of the first time around.

When you trust us, it's on us. We stand behind the build quality of our equipment. We stand behind the science inside our totes. We stand behind the way we do business. So, make room on the mulch yard. Your new workhorse will be there for a long, long time.







**888-663-6980 | [colorbiotics.com](https://colorbiotics.com)**

The Sahara® XP is covered by the following U.S. patents: 9950331B2 and 10981186. Colorbiotics® and Sahara® are trademarks of Sika Corporation in the U.S. and other countries.

©2025 Sika Corporation. All Rights Reserved. 9/2025